

**GRENFELL PROPERTY HIGHLIGHTS**

**BULK SAMPLES & DRIFT BACK SAMPLES**

**No 1 Vein / Sirola Vein**

Surface Pit: 21.7 tons @0.456 oz /ton gold \*  
 60 Foot Level: 177 tons @ 0.70 oz /ton gold\*  
 250 Foot Level: 0.2 oz/ton gold over 3 ft width for 180 ft of strike\*\*

**HISTORICAL DRILL INTERCEPTS**

**No. 6 Vein**

0.13 oz/ton Au over 10 feet\*  
 2.22 oz/ton Au over 3 feet\*  
 0.25 oz/ton Au over 5 feet\*  
 19.5 g/t Au over 1 meter\*\*

**Shea Vein**

0.41 oz/ton Au over 3 feet\*

**Southwest (SW) Zone (DDH JS1302)**

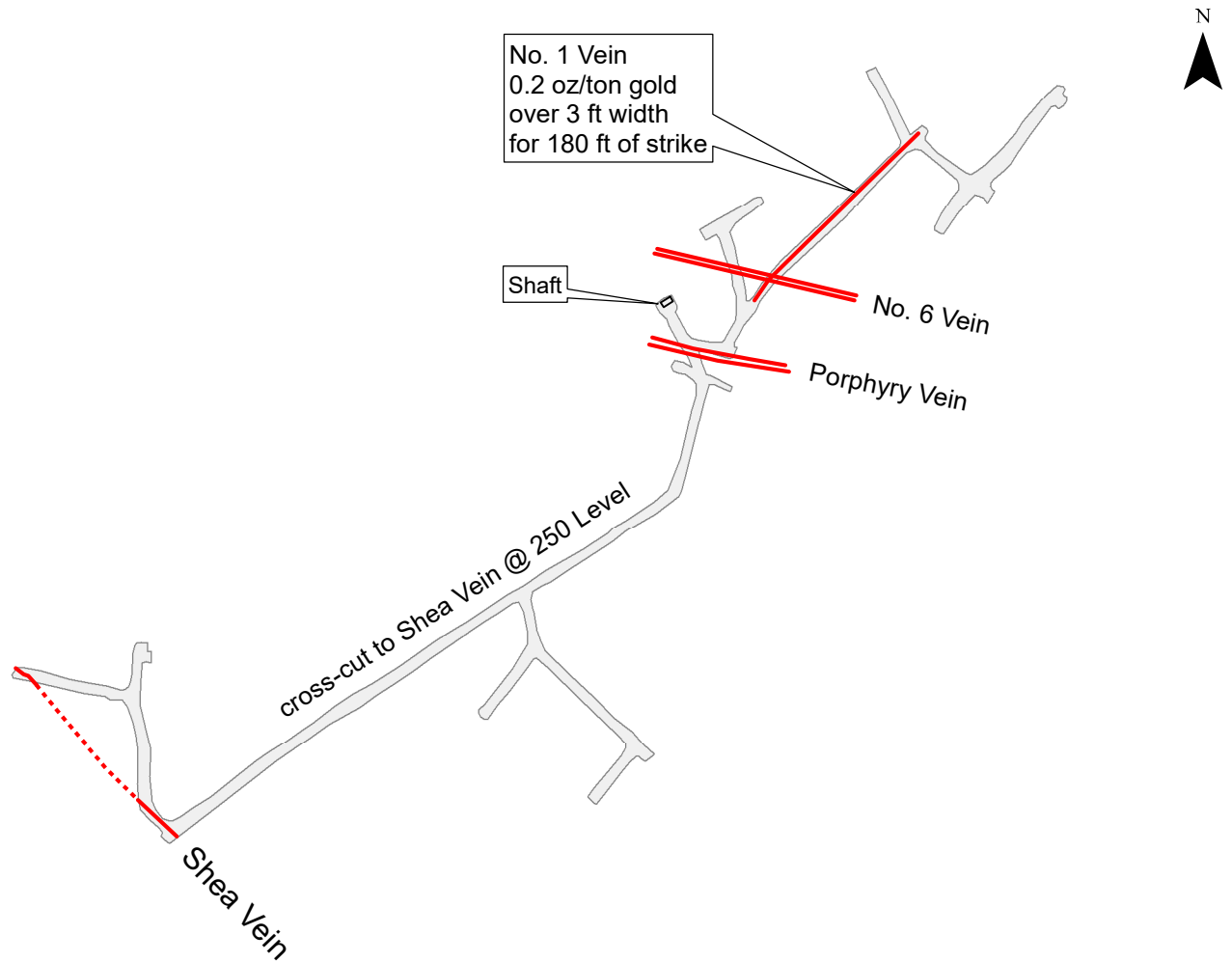
2.85 g/t gold over 8 meters\*\*  
 including 9.41 g/t over 1 meter\*\*

**Southwest Zone South (SWS) (DDH JS1303)**

2.07 g/t gold over 3.5 meters\*\*  
 including 6.47 g/t gold over 0.5 meters\*\*

\* Reference J. Londry P. Eng. 1985

\*\* Reference J.K. Filo P.Geo. 2013



Reference: Plan adapted from J.Sirola and Kirkland Consolidated Plans



Pelangio Exploration Inc.

**Grenfell Project  
 250 Level Plan**

Date: October, 2019

NAD 1983 UTM Zone 17N

Name: TS

File: grenfell\_ug\_comp