



PELANGIO

Success Through Exploration

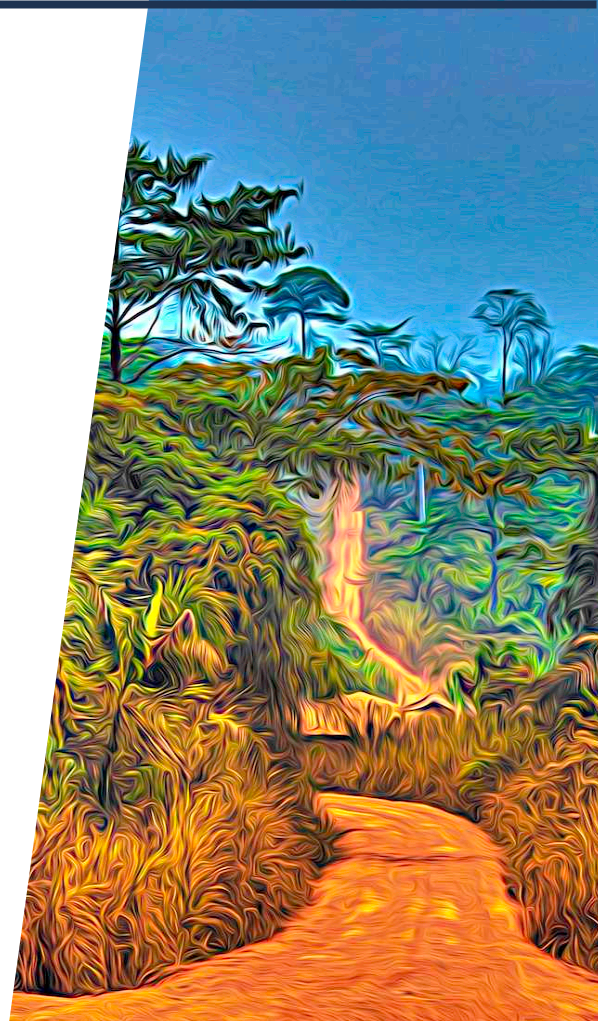
Pelangio Exploration Inc. | www.pelangio.com | ir@pelangio.com

PELANGIO EXPLORATION INC.

ANNUAL ESG REPORT 2020



PELANGIO
EXPLORATION
PX TSX:V



EXPLORING AND ADVANCING PROJECTS IN GHANA AND CANADA



Pelangio Exploration Inc.
2020 ESG Report

Published on March 14, 2022

This ESG report covers Pelangio's exploration sites in Canada and Ghana. The details are included in the answers to the specific questions.

[Disclaimer and Forward Looking Statements](#)

Company Profile

Organizational Profile

Name	Pelangio Exploration Inc.
Describe nature of activities, brands, products and services	Pelangio acquires and explores world-class land packages on strategic gold belts in Ghana, West Africa and Canada. In Ghana, the Company is exploring its two 100% owned camp-sized properties: the 100 km ² Manfo property, the site of seven near-surface gold discoveries, and the 284 km ² Obuasi property, located 4 km on strike and adjacent to AngloGold Ashanti's prolific high-grade Obuasi Mine, as well as the newly optioned Dankran property located adjacent to its Obuasi property. In Canada, the Company is currently focused in Ontario on its Grenfell property, located 10 km from Kirkland Lake, at its Dome West property, situated some 800 meters from the Dome Mine in Timmins and is advancing its Hailstone property in Saskatchewan. See www.pelangio.com for further detail on all Pelangio's properties.
Link to Corporate Website	https://pelangio.com
Industry Classification	NAICS: 21222 Gold and silver ore mining
Market Capitalization	\$0-\$100Million USD
Type of Operations	Exclusively non-producing operations
Company Headquarters	Toronto, Canada
Link to company's statements of: Purpose, Vision, Mission and Values; Sustainability/ESG strategy; previously published Sustainability/ESG performance or reports. (URL)	https://pelangio.com/corporate/corporate-governance/corporate-governance-practices/

ESG Accountability

Role and Name of highest authority within company for Environment, Social and Governance strategy, programs and performance.	Ingrid Hibbard, CEO
------------------------------------------------------------------------------------------------------------------------------	---------------------

ESG Reporting Period

Unless otherwise noted, all data contained in this report covers the following period:

From	2020-01-02
To	2021-01-01

Geographic Scope of Report

Unless otherwise noted, the data in this report covers ESG matters related to the following locations of operations

- Canada
- Ghana

The ESG Report will cover all properties in Canada and Ghana where exploration was completed during the year.



Identify notable exclusions, and reference any existing or planned reports that do or will address these (e.g. assets recently divested or acquired, non-managed joint ventures, specific exploration

This report excludes non active exploration properties.

activities, recently closed sites, etc.)

Fragile and Conflict-Affected Situations

Identify all of the entity's countries of operations that align with the World Bank's list of "Fragile and Conflict-Affected Situations"

None

Business Operations Scope of Report

Identify notable exclusions, and reference any existing or planned reports that do or will address these (e.g. assets recently divested or acquired, non-managed joint ventures, specific exploration activities, recently closed sites, etc.)

We are an exploration stage company. We are aggregating data for all projects.

Mineral Resource Types in Scope

Which of the following mineral resource types are covered by this report

- Inferred
- Indicated

Mineral Reserve Types in Scope

Which of the following mineral reserve types are covered by this report

None

Currency

Unless otherwise noted, all financial figures referenced in this report are in the following currency

CAD

Audit Status

Identify the degree to which any inputs of the report are third-party checked:

Self-Declared

Reporting Requirements

Are you including ESG targets

No

Are you capturing historical data as part of this reporting effort

No

Organizational Profile

Provide a list of externally-developed economic, environmental and social charters, principles, or other initiatives to which the organization subscribes, or which it endorses, e.g., GRI, UN Global Compact

The Company is reviewing and familiarizing itself with the Standards and working towards the identification of one or more that suit the size and scale of its operations. The Company is at the exploration stage within the mining industry.

Strategy

Provide a statement from the most senior decision-maker of the organization (i.e., CEO, chair, or equivalent senior position) about the relevance of sustainability to the organization and its strategy for addressing sustainability (CEO's message for this report)

The Company is undertaking to integrate sustainable practices and move toward ESG

reporting throughout all aspects of its operations.

This is an extensive process that will evolve over time and as more detailed quantitative information becomes or is made available through its suppliers and contractors.



Ingrid Hibbard, CEO



CEO Statement

Provide a description of key impacts, risks, and opportunities,

As an exploration company our environmental impacts are minimal, but the opportunities for improving the lives of the communities where we are working is substantial. We evaluate opportunities and initiatives for continuous improvement as they arise.

Ethics and Integrity

Provide a description of the organization's values, principles, standards, and norms of behaviour

<https://pelangio.com/corporate/corporate-governance/code-of-business-conduct-and-ethics/>

Environment

Compliance

a. Report fines and non-monetary sanctions for non-compliance with environmental laws and/or regulations in terms of:

i. Total monetary value of significant fines 0

ii. Total number of non-monetary sanctions 0

iii. Cases brought through dispute resolution mechanisms 0

b. If the organization is in compliance with environmental laws and/or regulations, a brief statement if this fact is sufficient

We are in compliance with environmental laws and/or regulations in Canada and Ghana.

Greenhouse Gas Emissions

Scope 1

For your operations, disclose the gross global Scope1 greenhouse gas (GHG) emissions to the atmosphere of the seven GHGs covered under the Kyoto Protocol (tonne CO₂-e):

Carbon dioxide (CO ₂) (tonne CO ₂ -e)	13.811
Methane (CH ₄) (tonne CO ₂ -e)	0
Nitrous oxide (N ₂ O) (tonne CO ₂ -e)	0
Hydrofluorocarbon-23 (CHF ₃) (tonne CO ₂ -e)	0
Hydrofluorocarbon-32 (CH ₂ F ₂) (tonne CO ₂ -e)	0
Sulphur hexafluoride (SF ₆) (tonne CO ₂ -e)	0
Nitrogen trifluoride (NF ₃) (tonne CO ₂ -e)	0
Perfluoromethane (CF ₄) (tonne CO ₂ -e)	0
Perfluoroethane (C ₂ F ₆) (tonne CO ₂ -e)	0
Perfluorobutane (C ₄ F ₁₀) (tonne CO ₂ -e)	0
Perfluorohexane (C ₆ F ₁₄) (tonne CO ₂ -e)	0
The total amount of gross global Scope 1 GHG emissions (CO ₂ -e) (tonne)	13.811
The percentage of its gross global Scope 1 GHG emissions that are covered under an emissions-limiting regulation or program that is intended to directly limit or reduce emissions, such as cap-and-trade schemes, carbon tax/fee systems, and other emissions control (e.g., command-and-control approach) and permit-based mechanisms.	100.0000%
The entity shall discuss its long-term and short-term strategy or plan to manage its Scope 1 greenhouse gas (GHG) emissions.	As an exploration company, our emissions are generally diminutive and we ensure the continued target of the absolute minimum. With drilling there will be fluctuating emissions as the drills are generally diesel powered. The amount of fuel used depends on the level of exploration and drilling activities undertaken during the period. Our Ghanaian exploration activities utilize a small portable drill which diminishes our ecological footprint and minimizes our disturbance of the local environment.

Intensity Ratio

The total amount of gross global Scope 1 GHG emissions (CO₂-e) (tonne) 13.811

Carbon Offset

Credits

How much CO₂ (metric tonnes) offset credits were purchased? 0

What is the percentage of the offset to the total CO₂ equivalence? 0%

Where were these credits purchased from?

Air Emissions

Report emissions of air pollutants that are released into the atmosphere:

Emissions of carbon monoxide, reported as CO (tonne)	0	Pelangio is an exploration stage company. Its activity levels vary dramatically but any emissions would be minuscule and short lived as most programs last only several weeks. It is beginning the process of ESG reporting and integration into its operations. At this point, the Company does not have systems to gauge or measure any potential emissions.
Emissions of oxides of nitrogen (NOx), reported as NOx (tonne)	0	
Emissions of oxides of sulphur (SOx), reported as SOx (tonne)	0	
Emissions of Particulate Matter 10 micrometres or less in diameter (PM ₁₀), reported as PM ₁₀ (tonne)	0	

Emissions of lead and lead compounds, reported as Pb (tonne)	0
Emissions of mercury and mercury compounds, reported as Hg (tonne)	0
Emissions of non-methane Volatile Organic Compounds (VOCs) (tonne)	0
Energy Management	
Total energy consumed in aggregate, in gigajoules (GJ) (hydrocarbons and electricity) including the fuel types used (e.g., biomass, hydro-electric power or bioenergy)	188.1
	<p>Pelangio is an exploration stage company. Drill rigs are used by all exploration companies to explore, test and discover new mineral deposits. Drills generally use diesel. Increased drilling will result in increased consumption.</p> <p>1 gallon of Diesel equivalent to 0.14652 GJ 1 gallon of gasoline equivalent to 0.1213 GJ</p> <p>1207.4 gallons of diesel x 0.14652 = 176.9 GJ 92.5 gallons of gasoline x 0.1213 = 11.2 GJ = 188.1 GJ</p>
Percentage energy consumed that was supplied by grid electricity	0.0000%
Percentage of energy consumed that is renewable energy	0.0000%
Water	
Efficiency	
Proportion of water reused and recycled by the site to reduce the overall consumptive water demand:	100.0000%
	The water used on our properties is only for cooling the drill. We use approximately 500 liters of water and then it is placed back into a settling pond.
Water Management	
Disclose the amount of water that was withdrawn from freshwater sources (in thousands of cubic meters):	0.828
Disclose the freshwater withdrawn in locations with High or Extremely High Baseline Water Stress as a percentage of the total water withdrawn	0.0000%
	This amount is based on an estimate of water used per meter of drilling.
Disclose freshwater consumed in locations with High or Extremely High Baseline Water Stress as a percentage of the total water consumed:	Does Not Apply
	No water is consumed. All water is returned to a catchment area.
Disclose the amount of water that was consumed in its operations (in thousands of cubic meters)	0
Was your organization subject to any fines, enforcement orders, and/or other penalties for water-related regulatory violations	No
Total number of instances of non-compliance, including violations of a technology-based standard and exceedances of quality-based standards.	0
Water and Effluents	
Water Consumption	
Report the total water consumption from all areas in megaliters	0.828
Waste	
Waste Generation and Significant Waste-Related Impacts	
Tailings amount	0
Waste Generated	
Explain the relevance to the companies sector or activities, e.g., tailings for an organization in the mining sector, electronic waste for an organization in the consumer electronics sector, or food waste for an organization in the agriculture or in the hospitality sector	As an exploration Company, the business practices do not generate waste tailings as we are not conducting mining operations.
Waste Management	
Total amount of tailings waste generated from mining activities by the entity during the reporting period (tonne)	0
	Pelangio is an exploration stage company. Its exploration activity levels vary dramatically but any emissions would be minuscule and short lived as most programs last only several weeks. It does not produce any ore. It is beginning the

process of ESG reporting and integration into its operations. At this point, the Company does not have systems to gauge or measure any potential emissions.

Percentage of tailings waste that was recycled during the reporting period:	Does Not Apply
Weight of tailings waste material that was reused (tonne)	
Amount of tailings waste sent externally for further recycling (tonne)	
Total amount of mineral processing waste generated by the entity during the reporting period (tonne), e.g. tailings and slag	
Tailings impoundments according to the following U.S. Mine Safety and Health Administration (MSHA) hazard potential classification:	0
Disclose the total weight of tailings produced (tonne)	0
Tailings Storage Facilities Management	
Does your company manage Tailings Storage Facilities	No
Provide an inventory of all talings storage facilities (TSFs):	
TSF #1: (1) facility name,	Not Applicable
TSF #1: (2) location,	
TSF #1: (3) ownership status,	
TSF #1: (4) operational status,	
TSF #1: (5) construction method,	
TSF #1: (6) maximum permitted storage capacity,	
TSF #1: (7) current amount of tailings stored,	
TSF #1: (8) consequence classification,	
TSF #1: (9) date of most recent independent technical review,	
TSF #1: (10) material findings,	
TSF #1: (11) mitigation measures,	
TSF #1: (12) site-specific EPRP	
TSF #2: (1) facility name,	
TSF #2: (2) location,	
TSF #2: (3) ownership status,	
TSF #2: (4) operational status,	
TSF #2: (5) construction method,	
TSF #2: (6) maximum permitted storage capacity,	
TSF #2: (7) current amount of tailings stored,	
TSF #2: (8) consequence classification,	
TSF #2: (9) date of most recent independent technical review,	
TSF #2: (10) material findings,	
TSF #2: (11) mitigation measures,	
TSF #2: (12) site-specific EPRP	
TSF #3: (1) facility name,	
TSF #3: (2) location,	
TSF #3: (3) ownership status,	
TSF #3: (4) operational status,	
TSF #3: (5) construction method,	

TSF #3: (6) maximum permitted storage capacity,	
TSF #3: (7) current amount of tailings stored,	
TSF #3: (8) consequence classification,	
TSF #3: (9) date of most recent independent technical review,	
TSF #3: (10) material findings,	
TSF #3: (11) mitigation measures,	
TSF #3: (12) site-specific EPRP	
Provide a summary of the tailings management systems used to monitor and maintain the structural integrity of tailings facilities and to minimize the risk of a catastrophic failure.	
Provide summary of tailings management systems and governance structure used to monitor and maintain the stability of tailings storage facilities	
Disclose the approach to the development of Emergency Preparedness and Response Plans (EPRPs).	
Disclose its approach to engagement concerning Emergency Preparedness and Response Plans (EPRPs) at tailings storage facilities, including the preparedness of local stakeholders.	
Innovation	
Spending on Research, Development, and Technologies for waste management compliance and improvement	0
	We have no waste and thus have no need for allocating funds to waste management.
Describe nature of spending on Research, Development and Technologies for waste management compliance and improvement	Not applicable for this stage of the Company's operations.
Biodiversity	
Management Plan	
List the environmental and biodiversity management plan(s) implemented at active sites	There was no formal plan required for any of the Company's exploration sites in 2020. In order to receive the permits to explore, the Company adheres to the highest standards required.
1.1 Mine lifecycle stages to which the plan(s) apply	Exploration and appraisal
1.2 The topics addressed by the plan(s)	Ecological and biodiversity impacts
1.3 The underlying references for its plan(s), including whether they are codes, guidelines, standards, or regulations; whether they were developed by the entity, an industry organization, a third-party organization (e.g., a non-governmental organization, a governmental agency, or some combination of these groups)	The Company secures all necessary governmental permits for its exploration activities. Those permits require the Company to adhere to environmental standards and the Company complies with all regulatory requirements.
Impacts	
Does access to the site involve traversing a protected area	No
Do any of the entities concessions share a watershed with a protected area	No
Provide context and description of site access involving traversing protected areas, and/or watersheds shared with a protected area. Include reference to measures in place to assure access, any proactive programs to support the biodiversity of the protected area, and any formal complaints or compliance issues and related steps to resolve	The Company ensures that all permitting applications are approved prior to access, which addresses the activities undertaken, and any biodiversity or access requirements are met. Pelangio's team makes every effort to leave an exploration site in better condition than it found it. In Ghana, the Company has switched to smaller man portable drills called Grasshoppers to limit any mobilization damage to the local environment or biodiversity when moving drills around. Further, the Company also backfills any unsafe exposures or small pits left by local artisanal minors for added safety measures for the benefit of its own team and others who may access the site, and to remediate sites left in that manner by these third parties.
Percentage of proved reserves in sites with protected conservation status or in areas of endangered species habitat:	Does Not Apply
Percentage of probable reserves in sites with protected conservation status or in areas of endangered species habitat:	Does Not Apply

Percentage of inferred, indicated and measured reserves in sites with protected conservation status or in areas of endangered species habitat:

Does Not Apply

Social

Employment

Scale of the Organization

i. Report the total number of direct employees worldwide (exclude contractors)	3
ii. Report the total number of contract employees worldwide	5 We could not gather this information during the foundation reporting period. We will ensure to gather this information moving forward. We define "contract workers" as 3rd- party Vendor affiliated staff.
ii. Report the total number of operations	1 Pelangio has a number of fully owned subsidiaries.

Employee Information

Report the total number of direct employees by employment type (permanent and temporary), by gender:	3
Total number of permanent employees	3
Total number of permanent employees - female	2
Total number of permanent employees - male	1
Total number of permanent employees - Non-binary	0
Total number of permanent employees - Unknown	
Total number of temporary employees	0
Total number of temporary employees - female	0
Total number of temporary employees - male	0
Total number of temporary employees - Non-binary	0
Total number of temporary employees - Unknown	
Report the total number of contractors by employment type (permanent and temporary), by gender:	5 We will be gathering this information moving forward.
Total number of permanent contractors	4
Total number of permanent contractors - female	0 Our contractors and suppliers do not provide this information. Going forward we will be requesting it.
Total number of permanent contractors - male	4 Our contractors and suppliers do not provide this information. Going forward we will be requesting it.
Total number of permanent contractors - Non-binary	0 Our contractors and suppliers do not provide this information. Going forward we will be requesting it.
Total number of permanent contractors - Unknown	
Total number of temporary contractors	1
Total number of temporary contractors - female	1 Our contractors and suppliers do not provide this information. Going forward we will be requesting it.
Total number of temporary contractors - male	0 Our contractors and suppliers do not provide

		this information. Going forward we will be requesting it.
	Total number of temporary contractors - Non-binary	0
		Our contractors and suppliers do not provide this information. Going forward we will be requesting it.
	Total number of temporary contractors - Unknown	
	Report the total number of employees by employment type (full-time and part-time), by gender:	3
	Total number of full-time employees - female	1
	Total number of part-time employees - female	1
	Total number of full-time employees - male	1
	Total number of part-time employees - male	0
	Total number of full-time employees - Non-binary	0
	Total number of part-time employees - Non-binary	0
	Report the total number of contractors by employment type (full-time and part-time), by gender:	5
	Total number of full-time contractors - female	0
		Our contractors and suppliers do not provide this information. Going forward we will be requesting it.
	Total number of part-time contractors - female	1
		Our contractors and suppliers do not provide this information. Going forward we will be requesting it.
	Total number of full-time contractors - male	0
		Our contractors and suppliers do not provide this information. Going forward we will be requesting it.
	Total number of part-time contractors - male	4
		Our contractors and suppliers do not provide this information. Going forward we will be requesting it.
	Total number of full-time contractors - Non-binary	0
		Our contractors and suppliers do not provide this information. Going forward we will be requesting it.
	Total number of part-time contractors - Non-binary	0
		Our contractors and suppliers do not provide this information. Going forward we will be requesting it.

Labour Relations

Collective Bargaining Agreements

Percentage of total direct employees covered by collective bargaining agreements: Does Not Apply

Notice Periods

Minimum number of weeks' notice typically provided to employees and their representatives prior to the implementation of significant operational changes that could substantially affect them 2

For full time employees the minimum notice period is 2 weeks.
For part-time daily employees, there is no notice period because they work on a daily basis.
All contract hirers are provided notice based on mutually agreed negotiated contract.

If your organization is subject to collective bargaining agreements, is the notice period and provisions for consultation and negotiation specified in those agreements No

Occupational Health and Safety

Work-related Injuries

Injuries - For all employees:

i. Number of fatalities as a result of work-related injury	0
i. Rate of fatalities resulting from work-related injury. Note: calculating per 200,000 hours worked	0
ii. Number of high-consequence work-related injuries (excluding fatalities)	0
ii. Rate of high-consequence work-related injuries (excluding fatalities)	0
iii. Number of recordable work-related injuries	0
iii. Rate of recordable work-related injuries	0
iv. Main types of work-related injury, e.g., confined space, trips, falls, etc.	There were no injuries.
v. Number of hours worked	3510
Injuries - workers who are not employees but whose work and/or workplace is controlled by the organization:	
i. Number of fatalities as a result of work-related injury	0
i. Rate of fatalities resulting from work-related injury. Note: calculating per 200,000 hours	0
ii. Number of high-consequence work-related injuries (excluding fatalities)	0
ii. Rate of high-consequence work-related injuries (excluding fatalities)	0
iii. Number of recordable work-related injuries	0
iii. Rate of recordable work-related injuries	0
iv. Main types of work-related injury, e.g., confined space, trips, falls, etc.	There were no injuries.
v. Number of hours worked	0
Combined (Employees and non-employees, but controlled by the organization):	
Total Hours Worked	3510
Total number of all work-related injuries	0
Rate of work-related injuries	0
Report the work-related hazards that pose a risk of high-consequence injury, including:	
i. How have these hazards been determined	The principal hazard risks for PX relate to workplace safety incidents associated with exploration field work. These risks include but are not limited to: automobile accidents, hazards related to heavy equipment and drill rig operation, exposure to potentially hazardous climates and environments. The hazards are determined in accordance with industry best practice standards for resource exploration as defined by e3 Plus: A Framework for Responsible Exploration as developed by the Prospectors & Developers Association of Canada (PDAC).
ii. Which of these hazards have caused or contributed to high-consequence injuries during the reporting period	No hazards have caused injuries in 2020. We plan to conduct a review in 2021.
iii. Actions taken or underway to eliminate these hazards and minimize risks using the hierarchy of controls	No hazards have caused injuries in 2020. We plan to conduct a review in 2021.
Report on actions taken or underway to eliminate other work-related hazards and minimize risks using the hierarchy of controls	The Company is proactive in implementing exploration industry standard practices for health and safety performance in all exploration activities. We seek continual improvement through the ongoing refinement of health and safety protocols to ensure the Company conducts ongoing reviews of potential work-related hazards and appropriate steps to minimize risk.
Whether and, if so, why any workers have been excluded from this disclosure, including the types of worker excluded, e.g., short-term contractors	No hazards have caused injuries in 2020. We plan to conduct a review in 2021.
Disclose any contextual information necessary to understand how the data have been compiled, i.e., any standards, methodologies, and assumptions used	No hazards have caused injuries in 2020. We plan to conduct a review in 2021.

Safety Training

Disclose the average number of training hours provided to its workforce for health, safety, and

emergency management training.

Average hours of health, safety, and emergency response training for (a) full-time/direct employees: 3

Average hours of health, safety, and emergency response training for (b) contract employees: 3

In addition to the Company safety training, contractors also have training in their own environments and employers.

Diversity and Equal Opportunity

b. Report the percentage of employees per employee category in each of the following diversity categories

Board of Directors:

Total Senior Managers

Percent Male

Percent Female

Percent Non-Binary

Percent under 30 years of age

Percent between 30 and 50 years of age

Percent over 50 years of age

Senior Management:

Total Senior Managers 2

Percent Male 50.0000%

Percent Female 50.0000%

Percent Non-Binary 0.0000%

Percent under 30 years of age 0.0000%

Percent between 30 and 50 years of age 0.0000%

Percent over 50 years of age 50.0000%

Salaried (excluding Senior Management):

Total Middle Managers 2

Percent Male 50.0000%

Percent Female 50.0000%

Percent Non-Binary 0.0000%

Percent under 30 years of age 0.0000%

Percent between 30 and 50 years of age 100.0000%

Percent over 50 years of age 0.0000%

Technical Employees (skilled hourly):

Total Technical Employees 0

Percent Male Does Not Apply

Percent Female Does Not Apply

Percent Non-Binary Does Not Apply

Percent under 30 years of age Does Not Apply

Percent between 30 and 50 years of age Does Not Apply

Percent over 50 years of age Does Not Apply

Production Employees (unskilled hourly):

Total Production Employees 0

Percent Male	Does Not Apply
Percent Female	Does Not Apply
Percent Non-Binary	Does Not Apply
Percent under 30 years of age	Does Not Apply
Percent between 30 and 50 years of age	Does Not Apply
Percent over 50 years of age	Does Not Apply
Contractors:	
Total Contractors	5
Percent Male	80.0000%
Percent Female	20.0000%
Percent Non-Binary	0.0000%
Percent under 30 years of age	0.0000%
Percent between 30 and 50 years of age	20.0000%
Percent over 50 years of age	80.0000%

Security, Human Rights and Rights of Indigenous People

Identify the countries of operations within the World Bank's list of "Fragile and Conflict-Affected Situations"	None No countries of operations within the World Banks list of "Fragile and Conflict-Affected Situations".
Describe the nature of any social risks, for all operating countries, that could have a material risk to operations	There are no known material social risks to operations.
Percentage of proved reserves that are located in or near areas of active conflict:	Does Not Apply
The total amount of proved reserves	0
Percentage of probable reserves that are located in or near areas of active conflict:	Does Not Apply
The total amount of probable reserves	0
Percentage of inferred, indicated and measured reserves that are located in or near areas of active conflict:	Does Not Apply
Total amount of inferred, indicated and/or measured reserves	0
Percentage of proved reserves that are located in or near areas that are considered to be indigenous peoples' land:	Does Not Apply
The total amount of proved reserves	0
Percentage of probable reserves that are located in or near areas that are considered to be indigenous peoples' land:	Does Not Apply
The total amount of probable reserves	0
Percentage of inferred, indicated and measured reserves that are located in or near areas that are considered to be indigenous peoples' land:	Does Not Apply
Total amount of inferred, indicated and measured reserves	0
Describe due diligence practices and procedures with respect to indigenous rights of communities in which it operates or intends to operate	MOU completed with the Waban Tribal Council.
Discuss practices and list procedures while operating in areas of conflict	We do not operate in areas of conflict.

Community Relations

Artisanal and Small-Scale Mining

Number of company operating sites where artisanal and small-scale mining (ASM) takes place on, or adjacent to, the site (not controlled by company/unauthorized):	3
Percentage of company operating sites where artisanal and small-scale mining (ASM) takes place on, or adjacent to, the site	50.0000%
	add details about the small scale artisanal mining.

Report the associated risks and the actions taken to manage and mitigate these risks

The Company has where necessary utilized a backhoe to backfill the small pits that are abandoned by artisanal miners in order to protect the safety of anyone who happens to go on site.

Programs

Report on community relations programs, objectives and achievements in the past 3 years

The Company has supported the local community by providing materials for the construction of a school. The Company also provides crop compensation in Ghana when conducting active exploration programs.

It also actively supports local entrepreneurs to setup a drilling company which employs local workers. It also provided support to small farming operations.



Donation of cement to local village



Community Programs

Discuss the processes, procedures, and practices to manage risks and opportunities associated with the rights and interests of communities in areas where it conducts business

The Company maintains strong relationships in the local communities where it operates.



Low Environmental Impact 'Grasshopper' Drill Rig



Processes, procedures & practices

Risks and Opportunities

Disclose the total number of site shutdowns or project delays due to non-technical factors.

1

Dome West had a delay due to site restrictions stemming from the Covid-19 pandemic.

Disclose the total aggregate duration (in days) of site shutdowns or project delays due to non-technical factors.

180

Access to our Dome West property in Timmins requires surface access via Newmont's Dome

Mine road. Pelangio was unable to conduct exploration or access its property for nine months due to the outbreak of Covid-19 and lock downs and restrictions. A nine-month extension to the exploration timelines was implemented under the Force Majeure clause. Exploration resumed in 2021.

Governance

Climate Change

Oversight

Is there board-level oversight of climate-related issues within your organization

Not currently but we plan to do so within the next two years

Responsibility

Provide the highest management-level position(s) or committee(s) with responsibility for climate-related issues:

Chief Executive Officer (CEO)

Nature of primary responsibility

Assessing climate-related risks and opportunities

Reporting

Frequency of reporting to the board on climate-related issues

As important matters arise

Incentives

Do you provide incentives for the management of climate-related issues, including the attainment of targets

No, and we do not plan to introduce them in the next two years

Risk and Opportunity Management

Does your organization have a process for identifying, assessing, and responding to climate-related risks and opportunities

No - lack of internal resources


Risk Assessments

Have you identified any inherent climate-related risks with the potential to have a substantive financial or strategic impact on your business

No - not yet evaluated

Opportunity Assessments

Have you identified any climate-related opportunities with the potential to have a substantive financial or strategic impact on your business	No
Strategy	
Have climate-related risks and opportunities influenced your organization's strategy and/or financial planning	Yes
	Pelangio is looking at the non-financial factors of ESG as part of its analysis and management process to identify and minimize risks and maximize growth opportunities and value for its shareholders.
Water Management	
Quality and Quantity Dependency	
Rate the importance (current and future) of freshwater quality and quantity to the success of your business:	
Direct use importance rating	Have not evaluated
Indirect use importance rating	Have not evaluated
Rate the importance (current and future) of sufficient quantity of recycled, brackish and/or produced water for the success of your business:	
Direct use importance rating	Have not evaluated
Indirect use importance rating	Have not evaluated
Risk Assessments	
Does your organization undertake a water-related risk assessment	No, water-related risks are not assessed
Select the options that best describe your procedures for identifying and assessing water-related risks:	
i. Coverage	None
ii. Risk Assessment Procedure	Not Applicable
	At this stage this is not applicable. We ensure compliance with all permitting laws addressing water related risks.
iii. frequency of Risk Assessment	Not defined
iv. How far into the future are risks considered	Not Applicable
Have you identified any inherent water-related risks with the potential to have a substantive financial or strategic impact on operations	No
Opportunity Assessments	
Have you identified any water-related opportunities with the potential to have a substantive financial or strategic impact on your business	No
Responsibility	
Provide the highest management-level position(s) or committee(s) with responsibility for water-related issues	There is currently no management-level responsibility for water-related issues
Policy	
Does your organization have a documented water policy	No
Select the options that best describe the scope and content of your organizations' water policy	None
Reporting	
Frequency of reporting to the board on water-related issues	As important matters arise
Incentives	
Do you provide incentives to C-suite employees or board members for the management of water-related issues	No, and we do not plan to introduce them in the next two years
Strategy	
Are water-related issues integrated into any aspects of your long-term strategic business plan:	No, water-related issues were not reviewed and there are no plans to do so
Structure	
a. Report the governance structure of the organization, including committees of the highest governance body, e.g., the Board of Directors, the Executives, the Board Environment Committee, Board Safety Committee, the Advisory Committee, etc.	Board of Directors, Special Advisory Board, Audit Committee, Compensation Committee, Executives
	Corporate Governance and Mandates

Committees	
b. Report the committees responsible for decision-making on economic, environmental, and social topics, e.g., the Board of Directors, the Executives, the Board Environment Committee, Board Safety Committee, the Advisory Committee, etc.	Board of Directors, Special Advisory Committee
Responsibility	
a. Has the organization appointed an executive-level position or positions with responsibility for economic, environmental, and social topics, e.g., is it part of the Governance structure of the company, the CFO or internal audit reporting to the Board	No
Reporting Structure	
b. Report whether position holders report directly to the highest governance body or CEO	Not applicable.
Consultation Process	
Report the processes for consultations between stakeholders and the highest governance body on economic, environmental and social topics, e.g., for most mining companies it would be the executives and operations and not the Board, and if delegated, explain how	Consultation would begin with Executives and is subsequently reported to the Board of Directors if material.
Composition	
Report the composition of the highest governance body and its committees by:	
Number of executive members	2
Number of non-executive members	3
Number of independent members	3
Less than 3 years	2
3-6 years	0
6-9 years	1
More than 10 years	2
Lists of each individual's other significant positions and commitments, and the nature of the commitments, e.g., other boards and executive positions	Please see link to the Board of Directors bios. https://pelangio.com/corporate/board-of-directors https://pelangio.com/corporate/board-of-directors Board of Directors
 Board of Directors	
Number of Male governance body members	4
Number of Female governance body members	1
Number of members from under-represented social groups	0
Description of competencies relating to economic, environmental, and social topics	The board is well rounded in skills and experience and takes a forward looking approach to economic, environmental and social topics. Board of Directors Biography's
Description of stakeholder representation	The board of directors has a fiduciary duty of care to the shareholders.
Board Diversity	
If available, provide a link to the entity's Board Diversity Policy Statement or attach the related document	Board of Director Mandate
Non-Executive Director	
a. Is the chair of the highest governance body also an executive officer in the organization	No
Conflicts of Interest	
a. Report the processes for the highest governance body to ensure conflicts of interest are avoided and managed, e.g., list procedures	The Company has a code of conduct and ethics and all board members have a fiduciary duty of care to keep oversight of the management and

	the affairs of the Company. The Board and all relevant committees meet regularly.
b. Report whether conflicts of interest are disclosed to stakeholders, including, as a minimum:	Yes
i. Cross-board membership	Yes
ii. Cross-shareholding with suppliers and other stakeholders	No
iii. Existence of controlling shareholder	No
iv. Related third party disclosures	Yes
Transparency	
a. Report the highest governance body's and senior executives' roles in the development, approval, and updating of the organization's purpose, value or mission statements, strategies, policies, and goals related to economic, environmental, and social topics	The Board of Directors and Special Advisory Committee play an active role in the Company in all aspects of its strategies and goals related to economic, environmental and social topics.
a. Report on the measures taken to develop and enhance the highest governance body's collective knowledge of economic, environmental, and social topics, e.g., board training	The Board received some initial training on ESG in March 2020.
d. Report the actions taken in response to evaluation of the highest governance body's performance with respect to governance of economic, environmental, and social topics, including, as a minimum, changes in membership and organizational practice, (response to external evaluations)	The Company is undertaking to integrate ESG, CSR and sustainability practices throughout its organization. This is a complex process that will continue to evolve, be refined and become more articulate over time.
a. Report the highest governance body's role in identifying and managing economic, environmental, and social topics and their impacts, risks, and opportunities – including its role in the implementation of due diligence processes, (committee roles)	The Board of Directors and Special Advisory Committee play an active role in the Company in all aspects and oversight.
b. Is stakeholder consultation used to support the highest governance body's identification and management of economic, environmental, and social topics and their impacts, risks, and opportunities, and if delegated, explain how	Yes
	In addition to discussing the risks and opportunities of any project, the company describes the relationship it has with the local communities and how it has sustained entrepreneurial endeavours within the local community when presenting to investors or presenting to third party stakeholders.
Remuneration	
b. Report how performance criteria in the remuneration policies relate to the highest governance body's and senior executives' objectives for economic, environmental, and social topics	The Company has a Compensation Committee Charter which relates to the senior executives objectives.
a. How are stakeholders' views sought and taken into account regarding remuneration	The Company has an annual meeting during which shareholder votes may influence the composition of the Board of Directors which can influence the remuneration and fees for senior executives and the auditors.
b. If applicable, report the results of votes on remuneration policies and proposals	Not applicable.
Ethics	
Describe the management system and due diligence procedures for assessing and managing corruption and bribery risks internally and associated with business partners in its value chain.	The Company has always operated with the highest levels of integrity through its Code of Conduct and Ethics policy. In late 2020, the Company began to formalize in writing an Anti-Corruption and Anti-Bribery Policy. The Policy was approved by the Board in 2021.
	Code of Business Conduct and Ethics
	Insider Trading Policy
	Whistleblower Policy
Report net production from activities located in the countries with the 20 lowest rankings in Transparency International's Corruption Perception Index (CPI) (Saleable tonne):	0
Anti-corruption	
Communication and Training	
i. Total number of governance body members that have received training on anti-corruption, broken down by region	5
ii. Total percentage of governance body members that have received training on anti-corruption, broken down by region:	100.0000%
Total number and percentage of employees that have received training on anti-corruption, broken down by employee category and region:	3



1a. Total number of employees that received training on anti-corruption	3
Total number of employees	3
1b. Total percentage of employees that received training on anti-corruption	100.0000%
2a. Total number of senior employees that received training on anti-corruption	1
Total number of senior employees	1
2b. Percentage of senior employees that received training on anti-corruption	100.0000%
3a. Total number of middle management employees have received training on anti-corruption	2
Total number of middle management employees	2
3b. Percentage of middle management employees have received training on anti-corruption	100.0000%
4a. Total number of technical employees that received training on anti-corruption	2
Total number of technical employees	2
4b. Percentage of technical employees that received training on anti-corruption	100.0000%
5a. Total number of production employees that received training on anti-corruption	0
Total number of production employees	0
5b. Percentage of production employees that received training on anti-corruption	Does Not Apply
6a. Total number of administrative employees that received training on anti-corruption	2
Total number of administrative employees	2
6b. Percentage of administrative employees that received training on anti-corruption	100.0000%

We are an exploration company, thus have not production employees.

Material Topics

Process to determine material topics

Describe the process followed to determine its material topics, including:

i. How has the organization identified actual and potential, negative and positive impacts on the economy, environment, and people, including impacts on their human rights, across its activities and business relationships; provide details.

Other external sources, please list

Not applicable

ii. How has the organization prioritized the impacts for reporting based on their significance;

Not Applicable

Specify the stakeholders and experts whose views have informed the process of determining its material topics and provide details.

- Business partners
- Employees and other workers
- Local communities
- Shareholders and other capital providers

List of material topics

List the organization's material topics

Not Applicable

List the organization's non-material topics

Not Applicable

Provide reason for considering such topics not material, provide details.

Not applicable

Report changes to the list of material topics compared to the previous reporting period.

Not Applicable

Tax

Describe the approach to stakeholder engagement and management of stakeholder concerns related to tax, including:

i. The approach to engagement with tax authorities

The approach is compliant with tax law in all jurisdictions in which the Company operates.

ii. The approach to public policy advocacy on tax

The Company is not actively advocating for public policy changes to taxation.

iii. the processes for collecting and considering the views and concerns of stakeholders, including external stakeholders

The Company has a whistleblower policy on its website, with information for stakeholders on how to communicate with the audit committee which is responsible for taxation and audit.

This document was prepared using  ONYEN , Planet Earth's complete ESG reporting solution.