

GRENFELL PROPERTY HIGHLIGHTS

BULK SAMPLES & DRIFT BACK SAMPLES

No 1 Vein / Sirola Vein

Surface Pit: 21.7 tons @0.456 oz /ton gold *
 60 Foot Level: 177 tons @ 0.70 oz /ton gold*
 250 Foot Level: 0.2 oz/ton gold over 3 ft width for 180 ft of strike**

HISTORICAL DRILL INTERCEPTS

No. 6 Vein

0.13 oz/ton Au over 10 feet*
 2.22 oz/ton Au over 3 feet*
 0.25 oz/ton Au over 5 feet*
 19.5 g/t Au over 1 meter**

Shea Vein

0.41 oz/ton Au over 3 feet*

Southwest (SW) Zone (DDH JS1302)

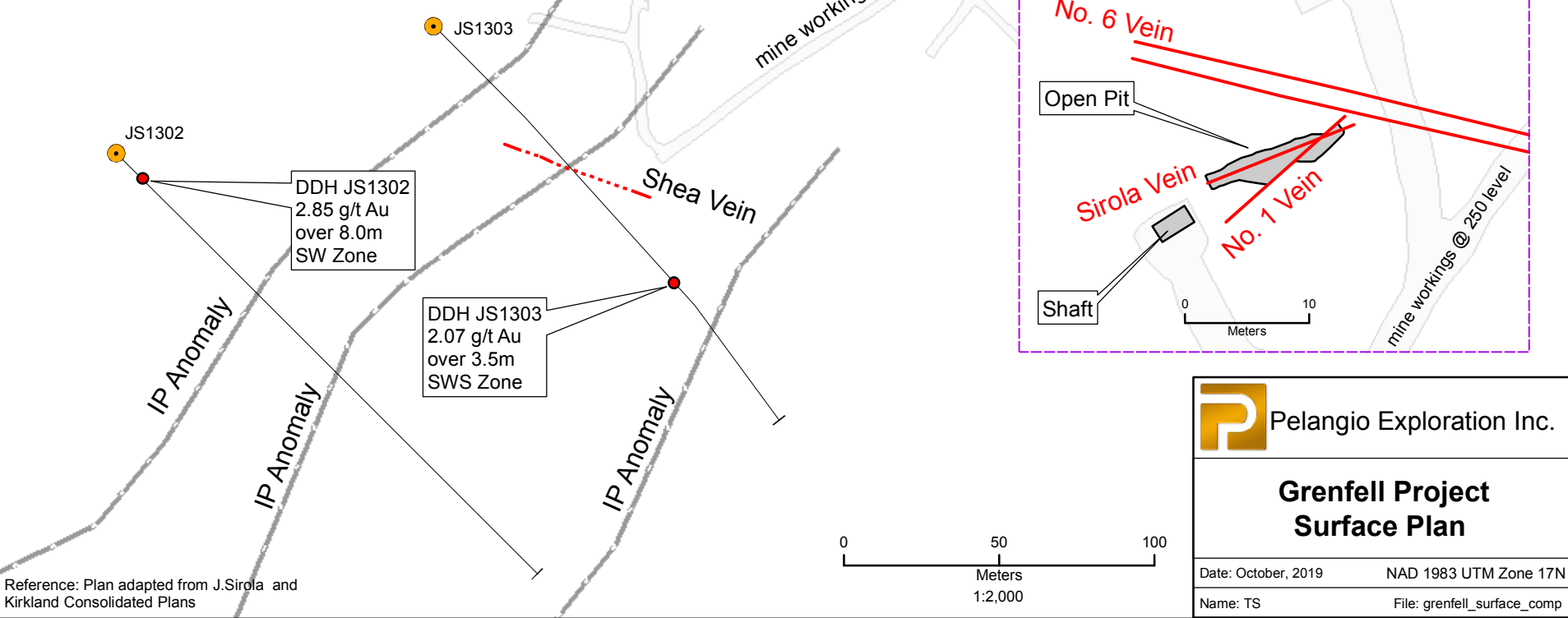
2.85 g/t gold over 8 meters**
 including 9.41 g/t over 1 meter**

Southwest Zone South (SWS) (DDH JS1303)

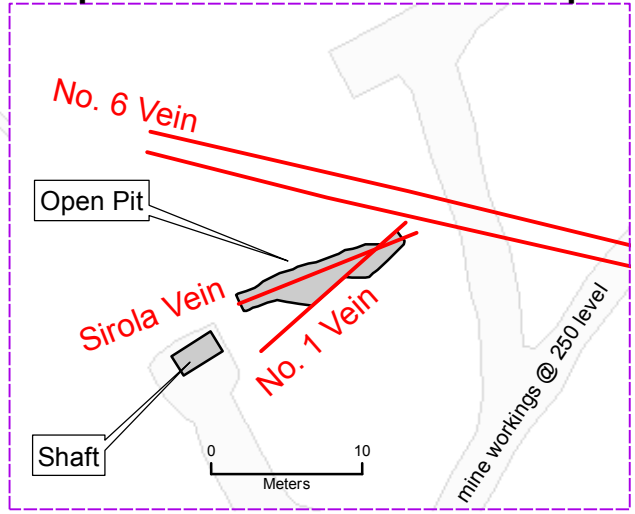
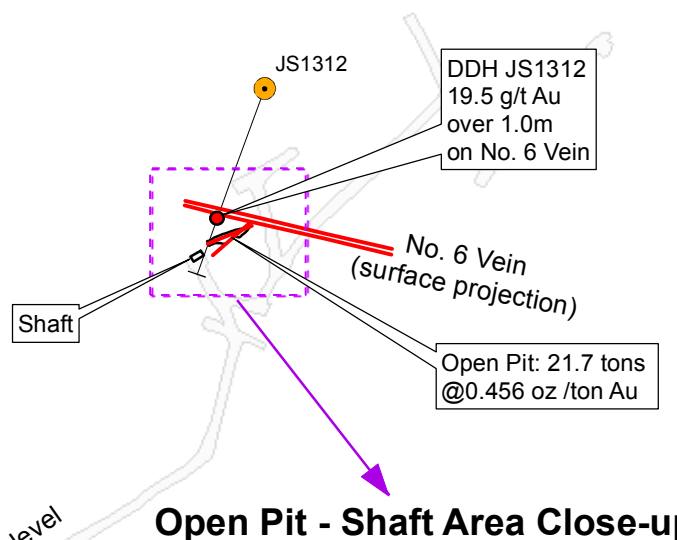
2.07 g/t gold over 3.5 meters**
 including 6.47 g/t gold over 0.5 meters**

* Reference J. Londry P. Eng. 1985

** Reference J.K. Filo P.Geo. 2013



Reference: Plan adapted from J.Sirola and Kirkland Consolidated Plans



 Pelangio Exploration Inc.

**Grenfell Project
Surface Plan**

Date: October, 2019 NAD 1983 UTM Zone 17N
 Name: TS File: grenfell_surface_comp